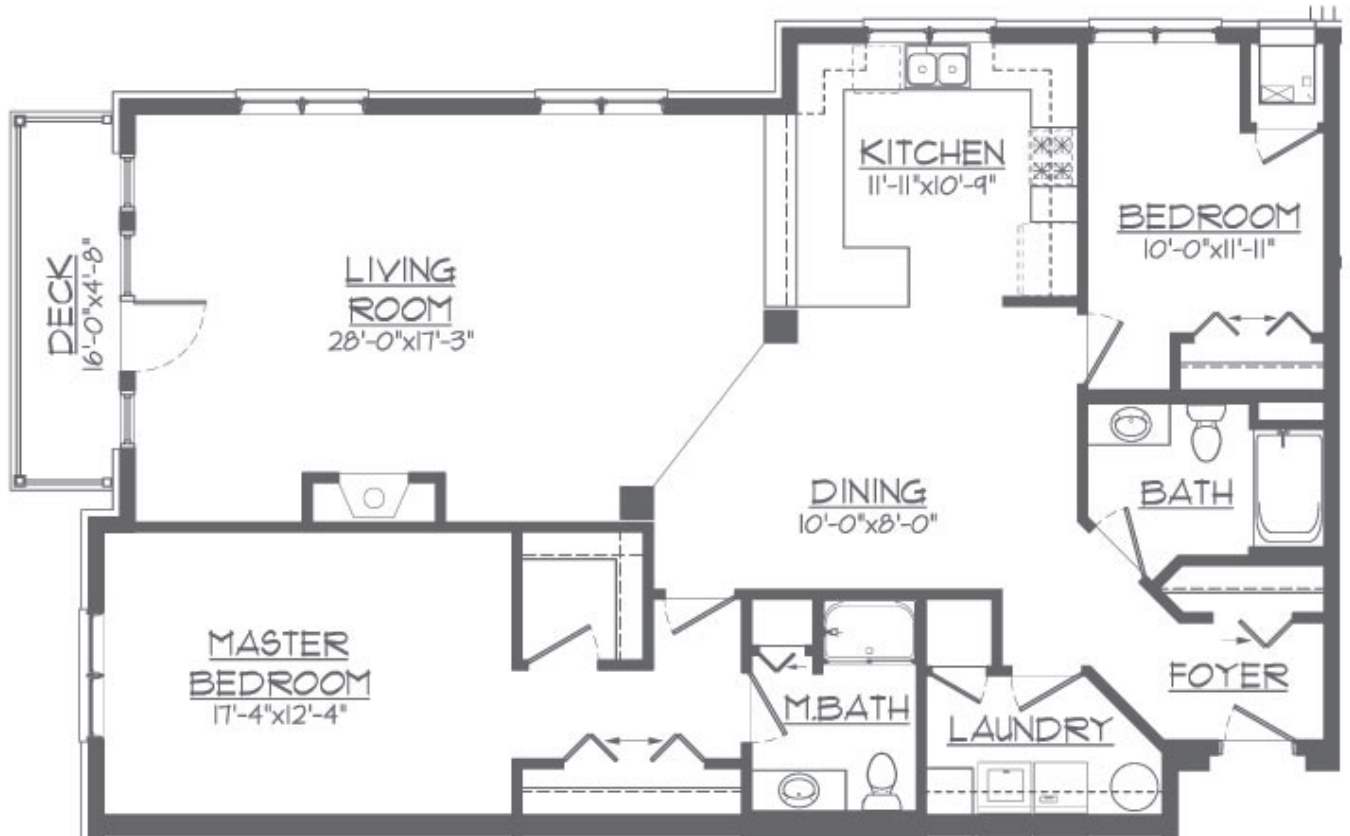
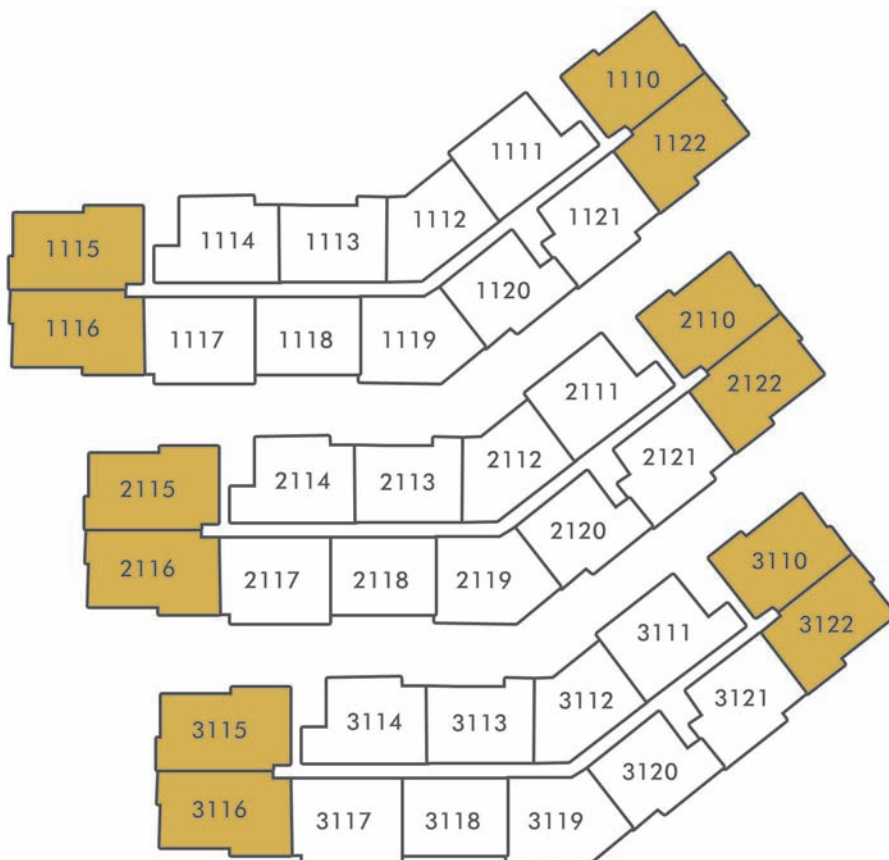


FLOOR PLAN 2



UNITS



FEATURES

- 1,419-1,702 SQ FT**
2 BEDROOM, 2 BATH
- MILLWORK PACKAGE**
Birch Prairie base moulding, casings and cabinets
- COUNTERTOPS**
Quartz Hanstone kitchen top
Molded marble counters in baths
- FLOORING**
Laminate wood floors in kitchen, dining room, foyer and hall
Ceramic in bathrooms
Vinyl in utility room
Carpet in bedrooms
- FIREPLACE FACING**
6' x 5' culture stone facing with Birch mantle
- KITCHEN SINK**
Stainless steel undermount
- APPLIANCE PACKAGE**
Stainless steel appliance package in kitchen
Free standing front load washer and dryer